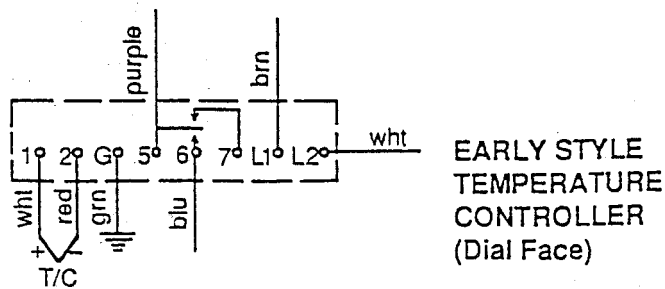
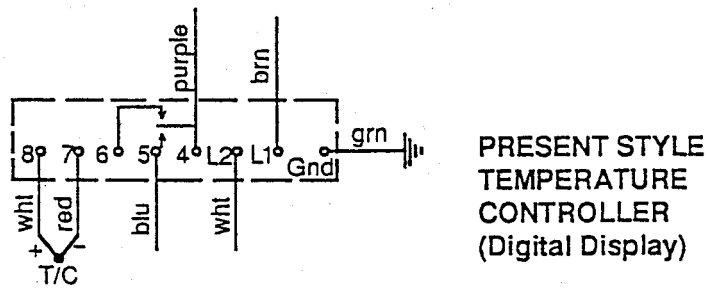
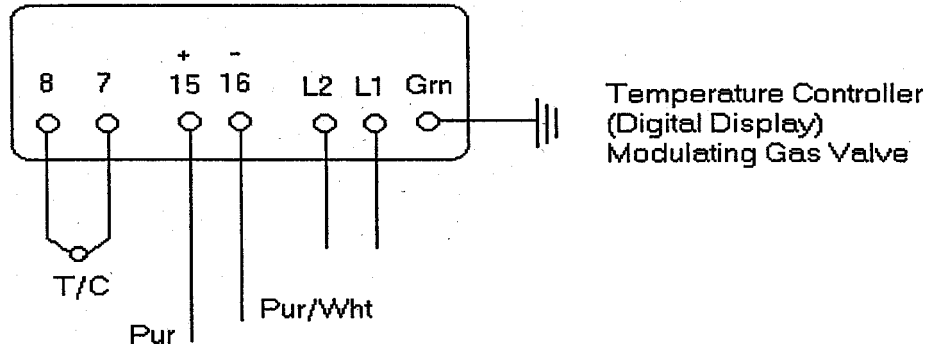


SECTION 4 ELECTRICAL WIRING DIAGRAMS

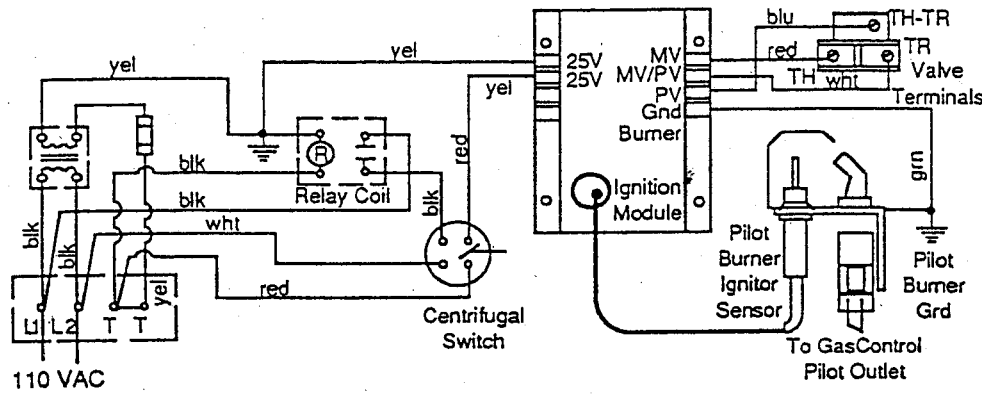
I. COMPONENT WIRING

A. Temperature Controllers

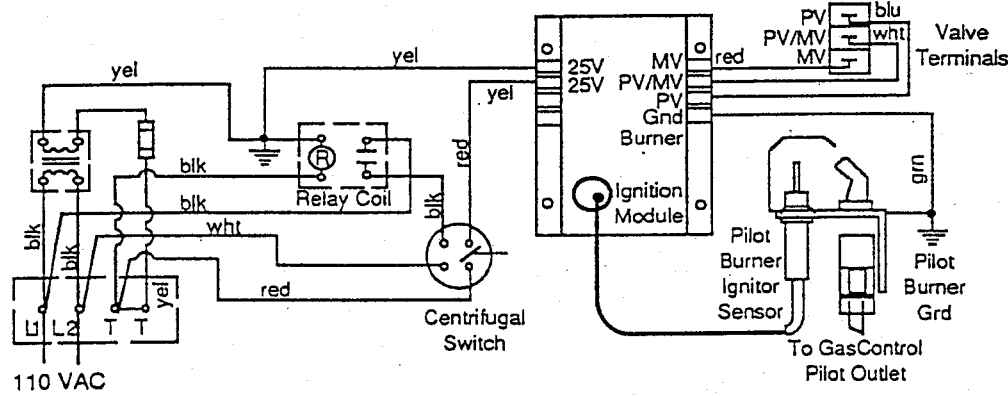


SECTION 4 - ELECTRICAL WIRING DIAGRAMS

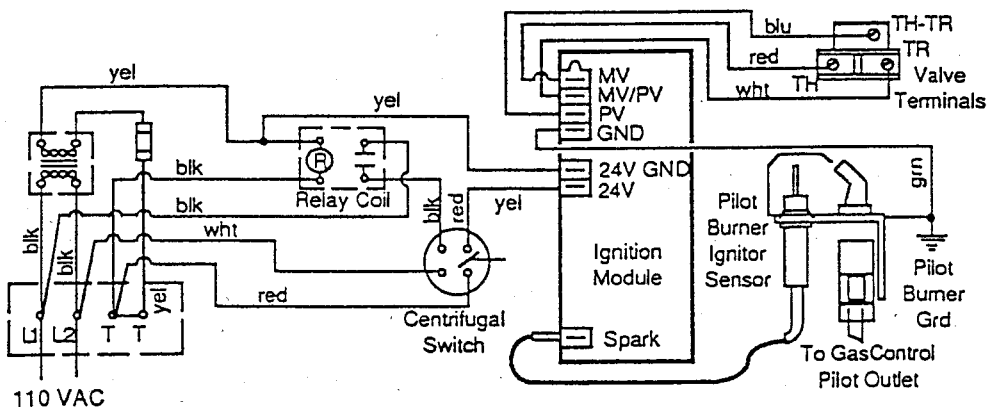
B. Ignition Modules



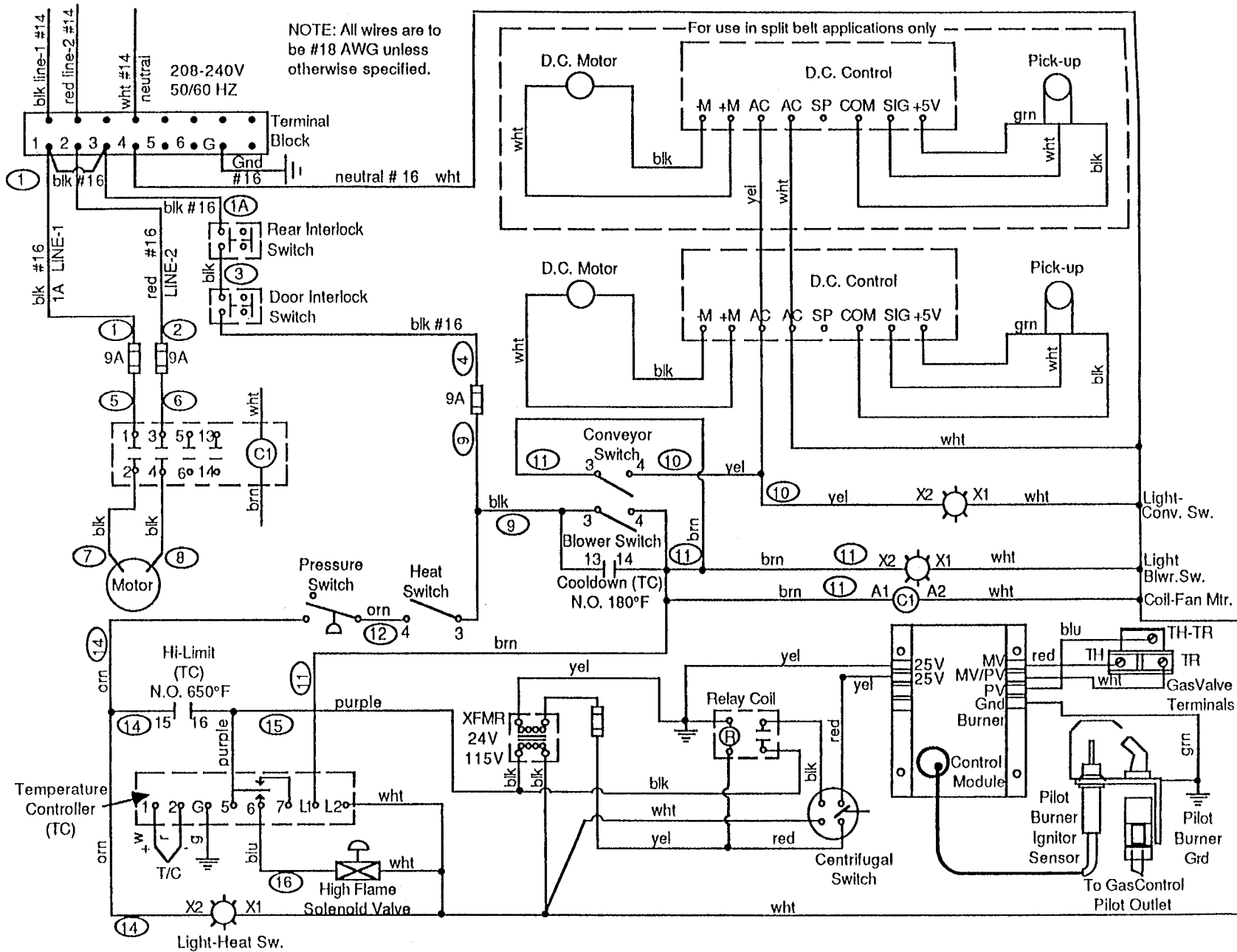
EARLY STYLE
IGNITION
MODULE
with
EARLY STYLE
CONTROL VALVE



EARLY STYLE
IGNITION
MODULE
with
PRESENT STYLE
CONTROL VALVE

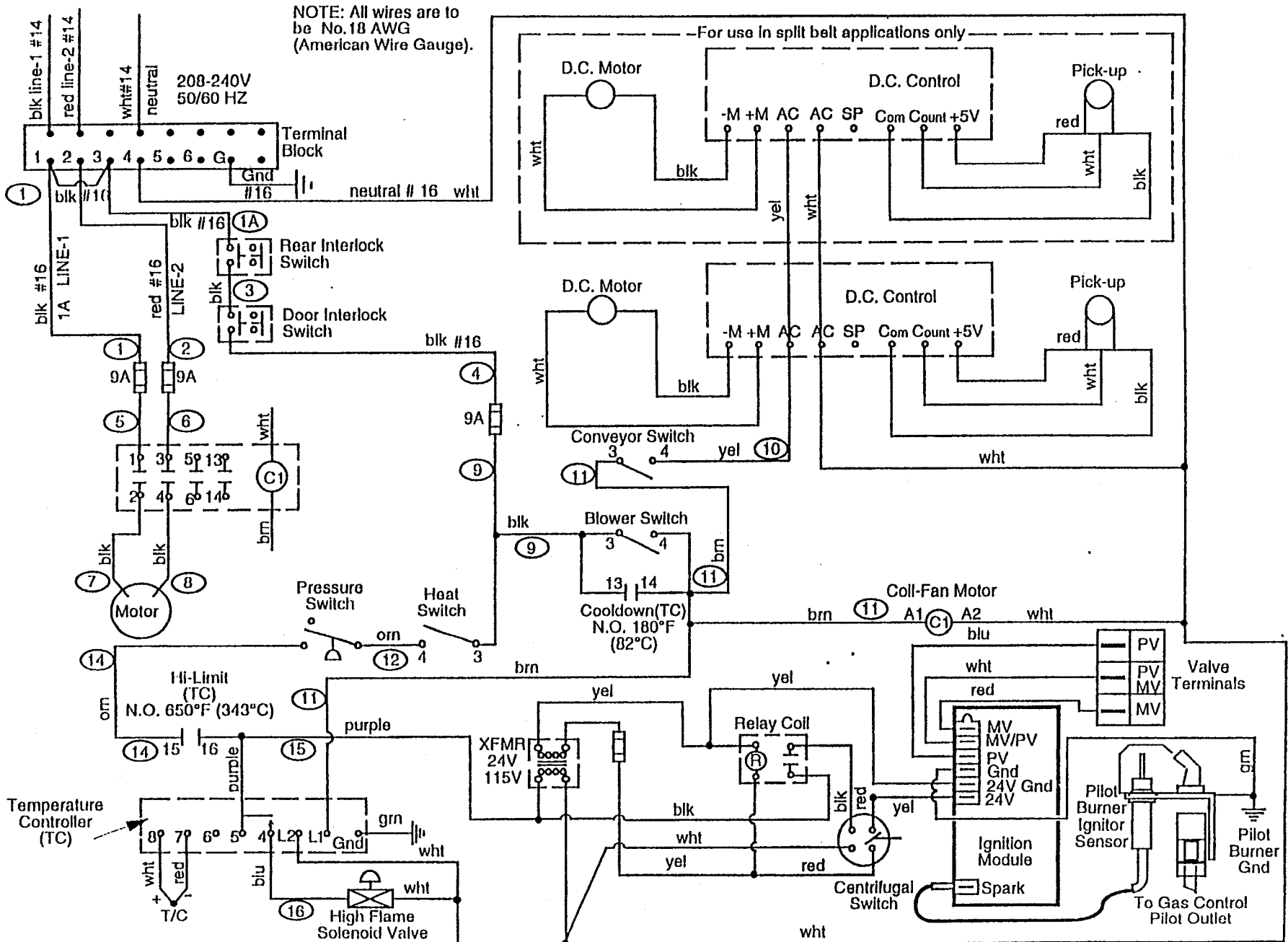


PRESENT
STYLE
IGNITION
MODULE
with
EARLY STYLE
CONTROL VALVE

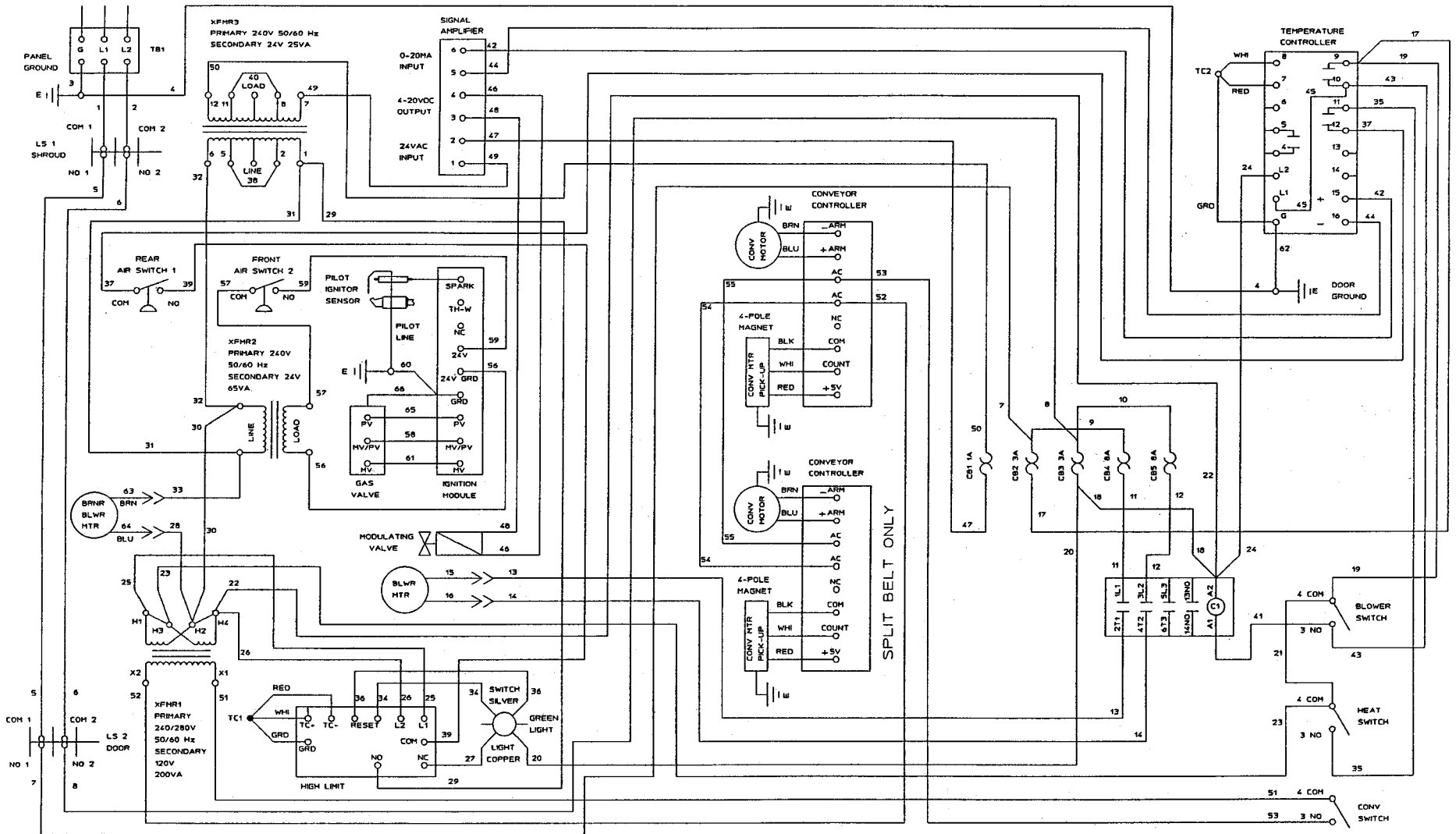


PS200-series gas oven (with solenoid valve and analog temp control), 208/240V main blower motor, 120V control circuit 208/240V, 50/60 Hz, 1 Ph, 3 pole, 4 wire supply (2 hot, 1 neutral, 1 ground)

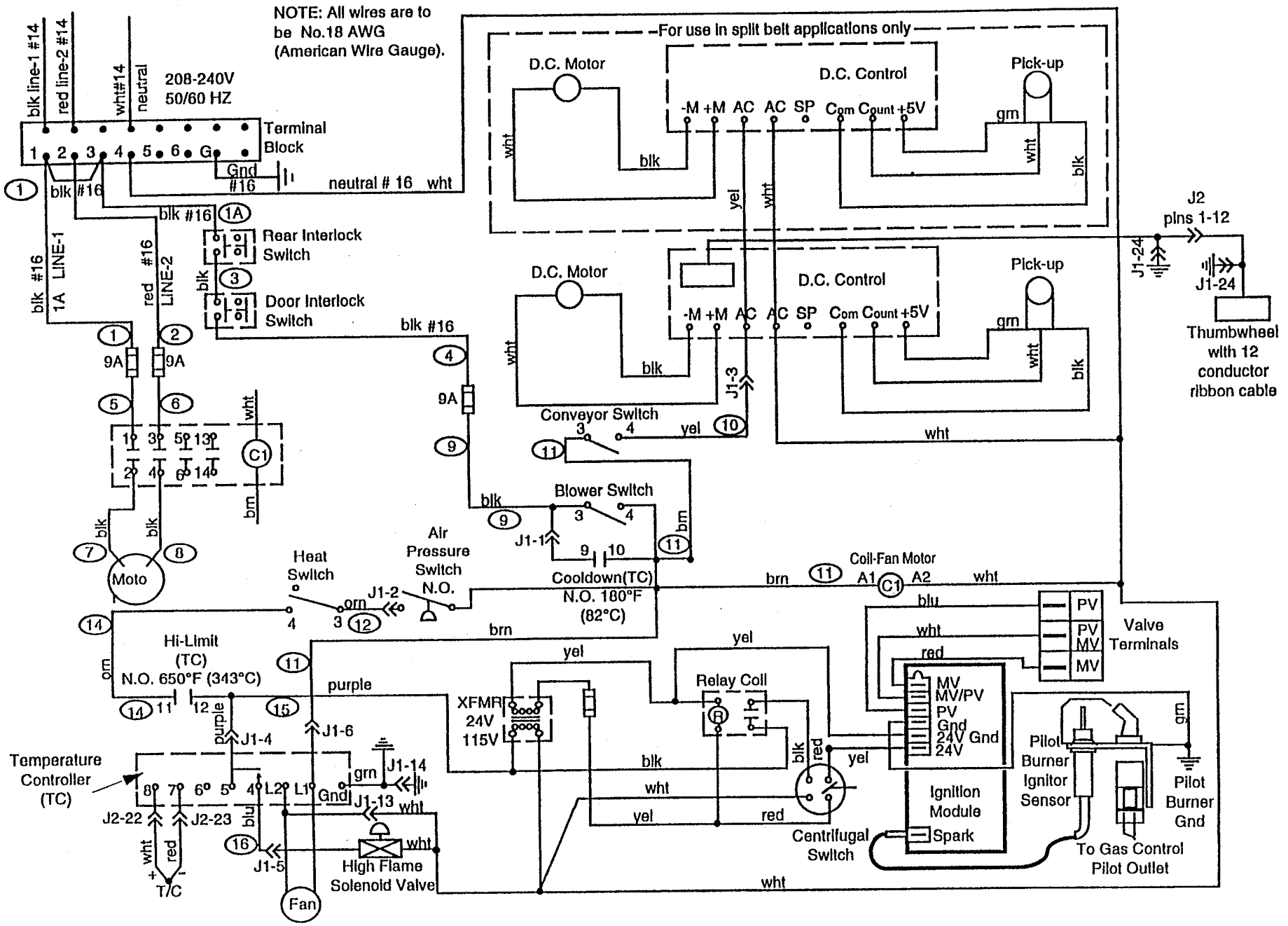
152



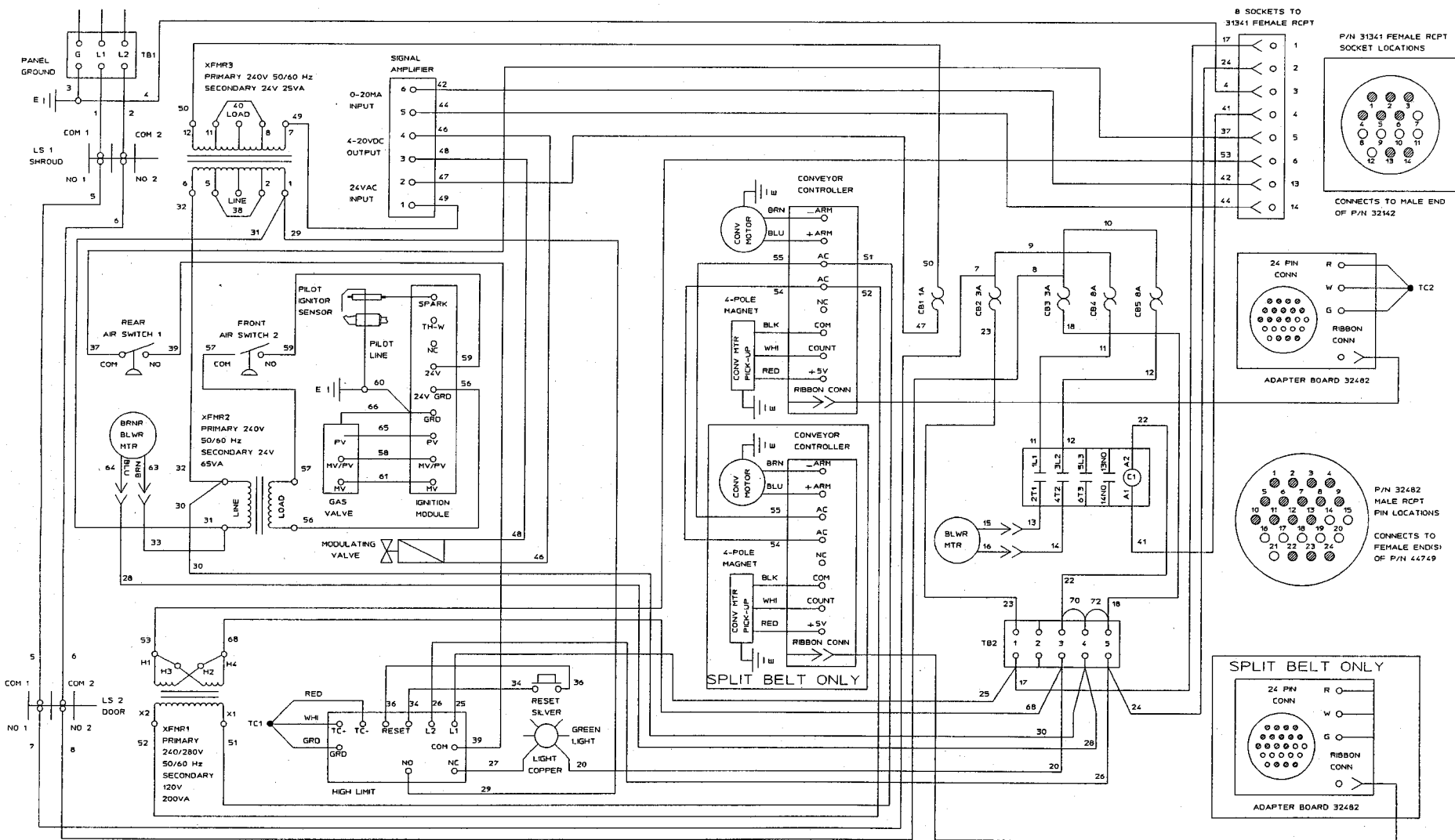
PS200-series gas oven (with solenoid valve and digital temp control), 208/240V main blower motor, 120V control circuit 208/240V, 50/60 Hz, 1 Ph, 3 pole, 4 wire supply (2 hot, 1 neutral, 1 ground)



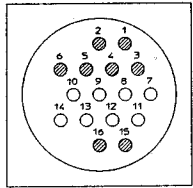
PS200-series gas oven (with modulating valve), 208/240V main blower motor and control circuit
208/240V, 50/60 Hz, 1 Ph, 2 pole, 3 wire supply (2 hot, 1 ground)



PS200R68-series gas oven (with solenoid valve), 208/240V main blower motor, 120V control circuit
208/240V, 50/60 Hz, 1 Ph, 3 pole, 4 wire supply (2 hot, 1 neutral, 1 ground)

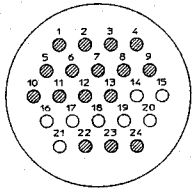


P/N 31279
MALE RCPT
PIN LOCATIONS



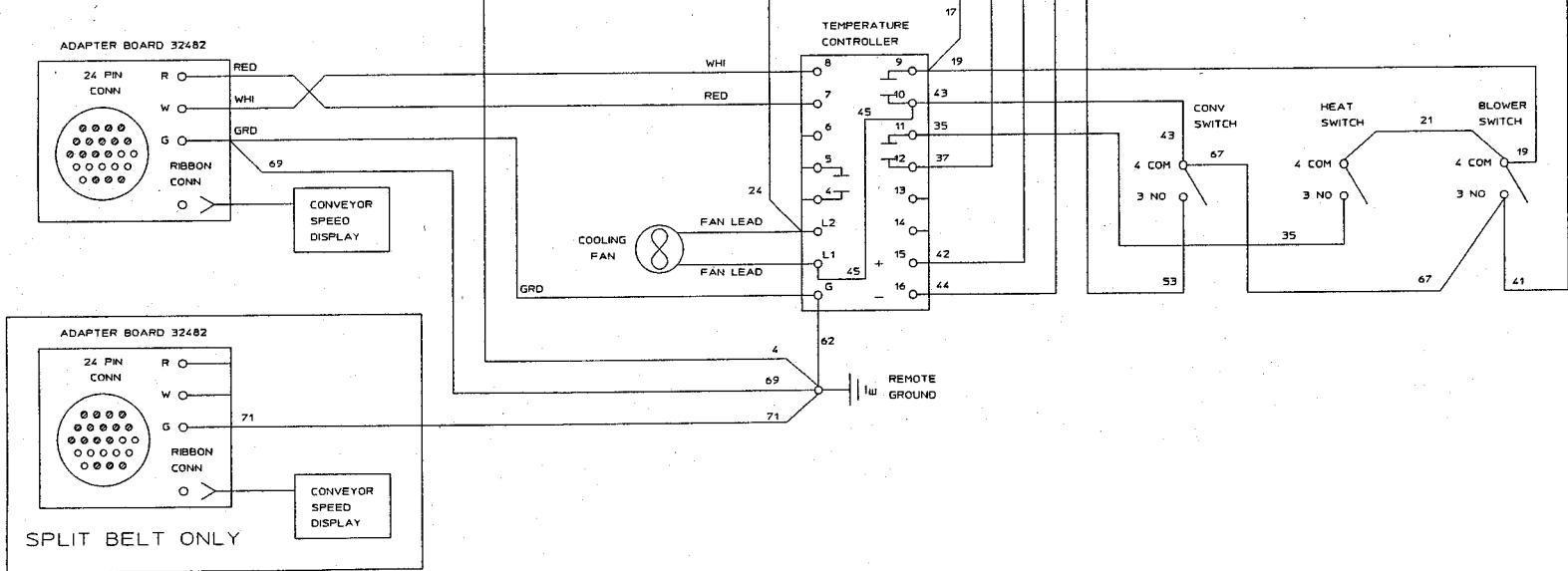
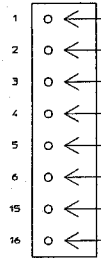
CONNECTS TO
FEMALE END
OF P/N 32142

P/N 32482
MALE RCPT
PIN LOCATIONS

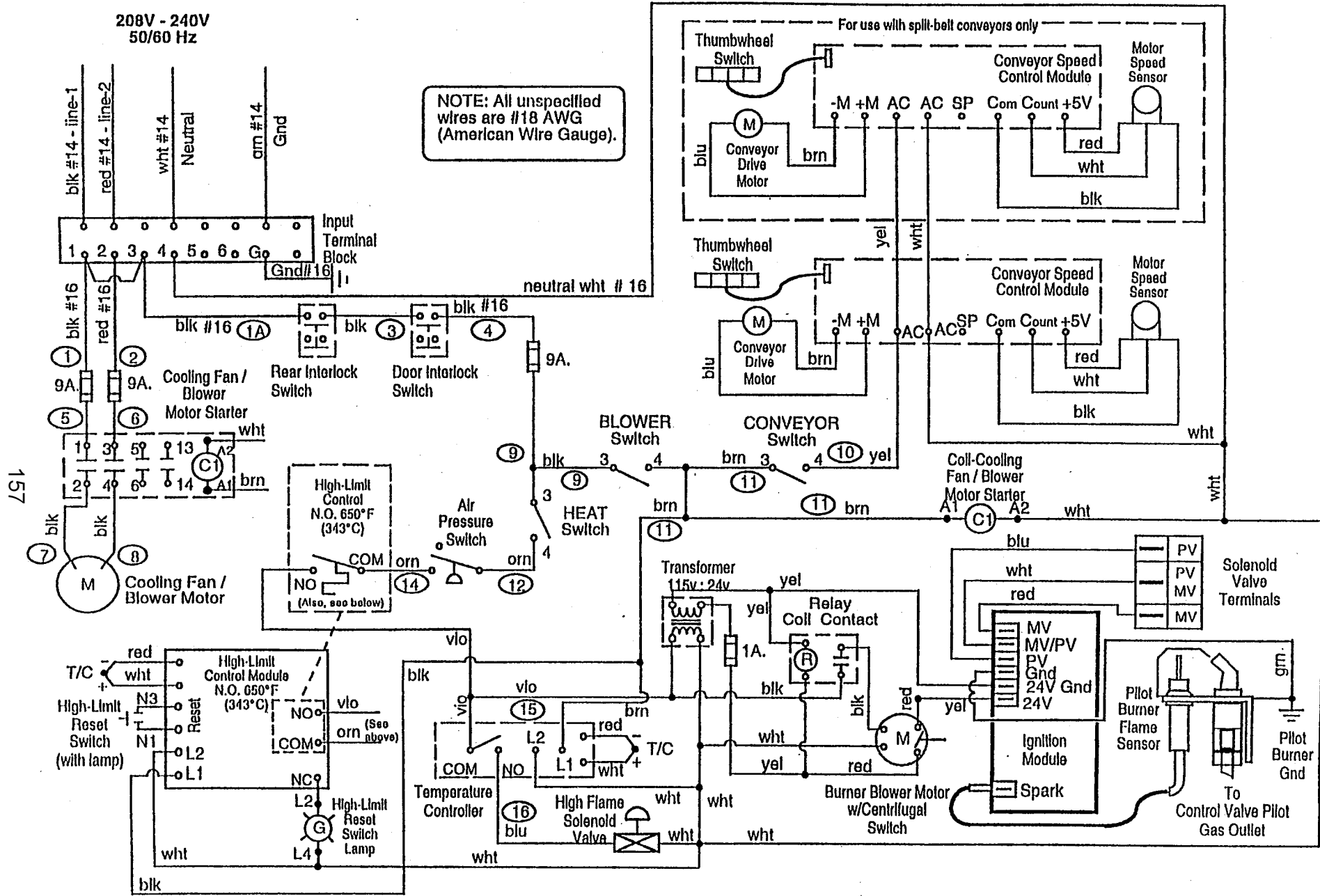


CONNECTS TO
FEMALE END(S)
OF P/N 44749

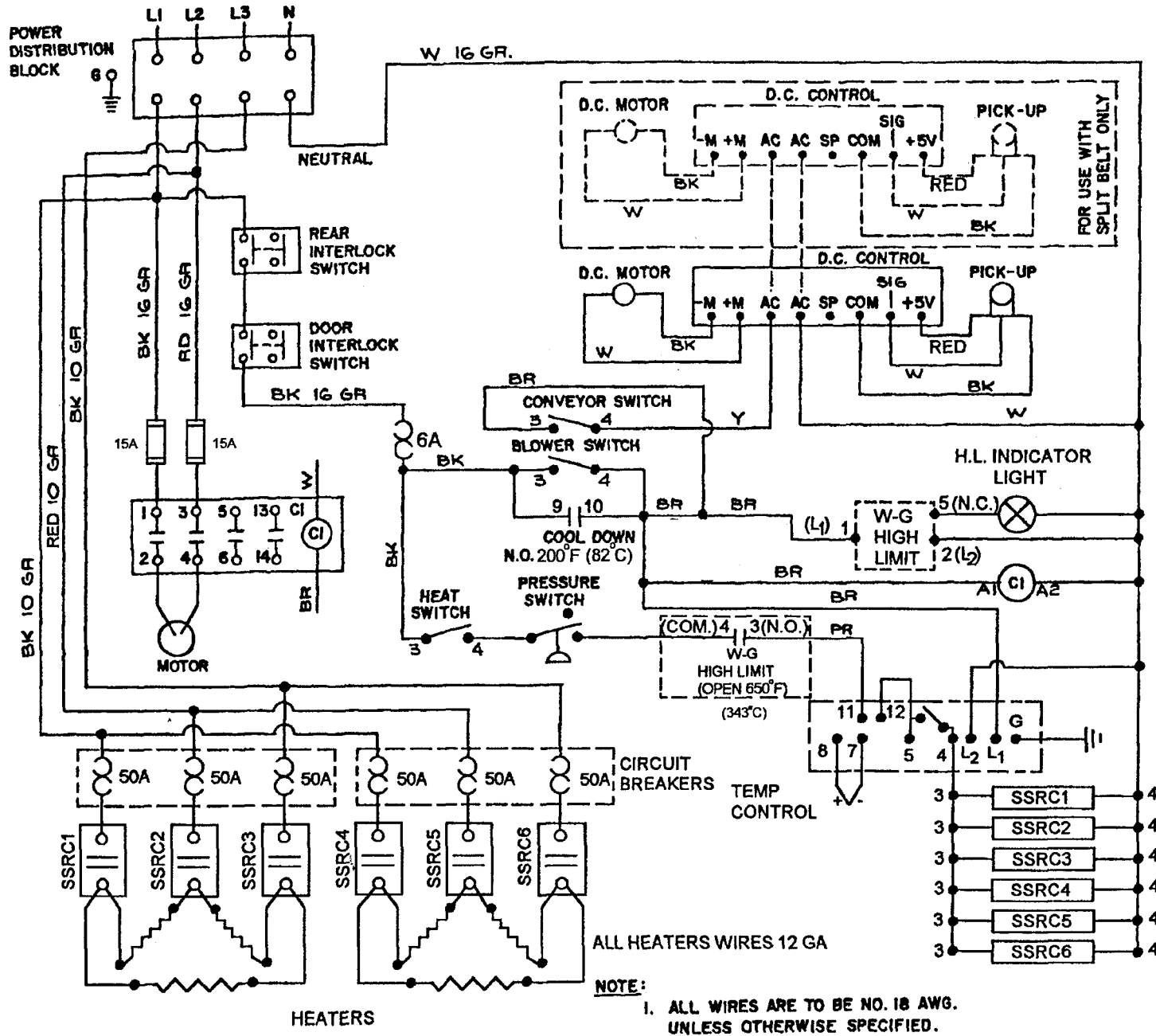
8 PINS TO
P/N 31279
MALE RCPT



156

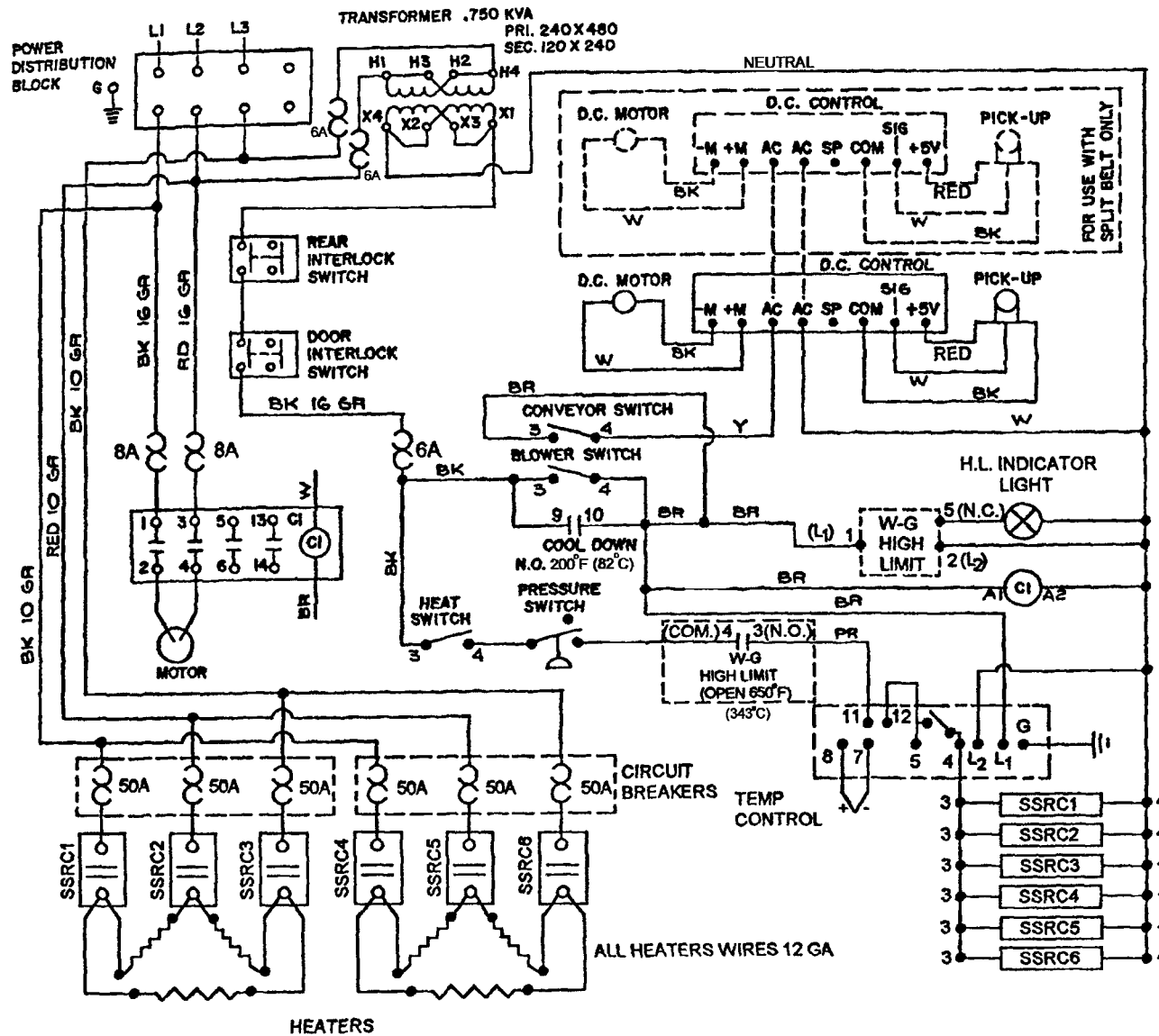


PS200VL-series gas oven (with analog temp control 34983), 208/240V main blower motor, 120V control circuit
208/240V, 50/60 Hz, 1 Ph, 3 pole, 4 wire supply (2 hot, 1 neutral, 1 ground)



158

PS200-series electric oven (USA version), 208/240V main blower motor and heating elements, 120V control circuit 208/240V, 50/60 Hz, 3 Ph, 4 pole, 5 wire supply (3 hot, 1 neutral, 1 ground)

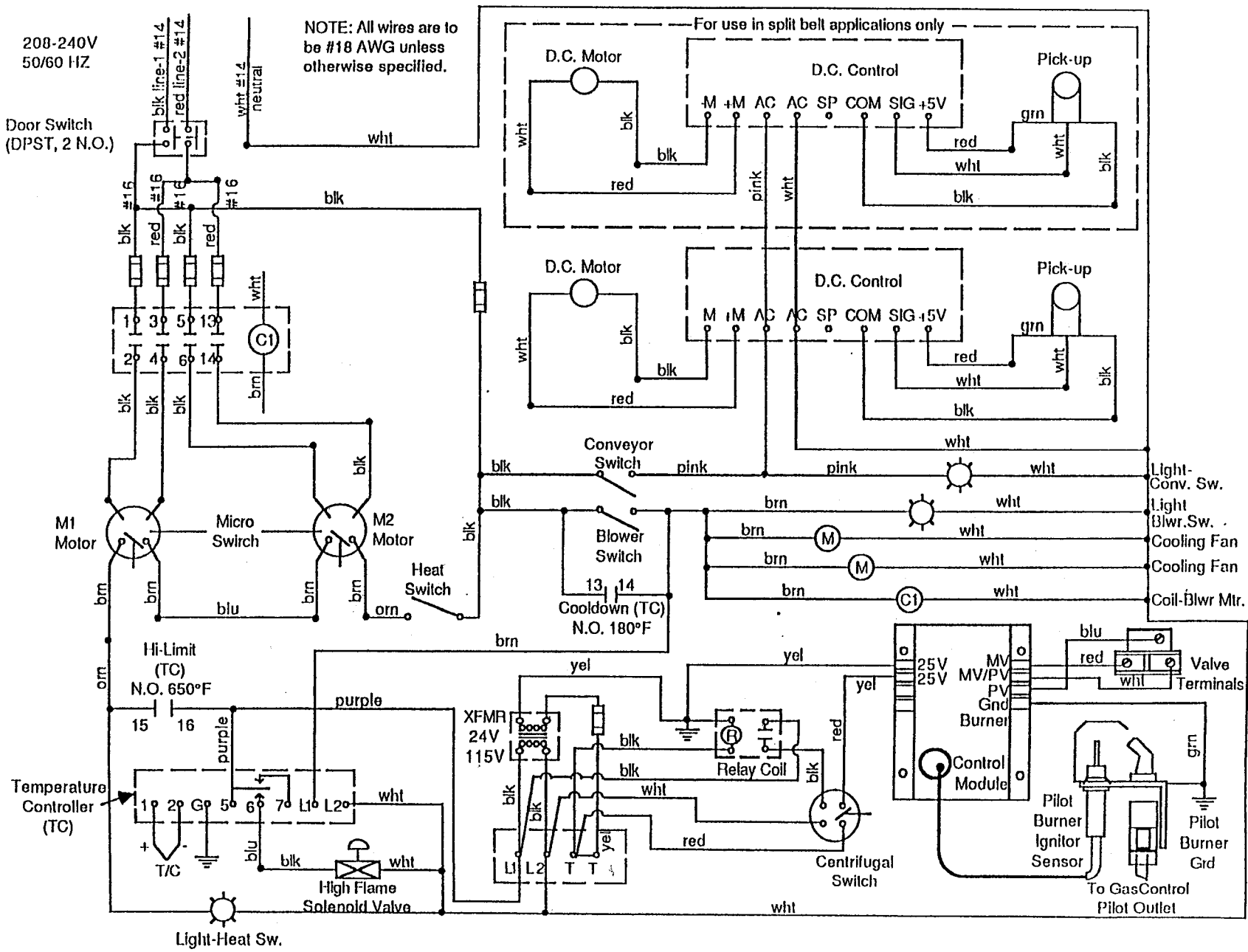


NOTE:

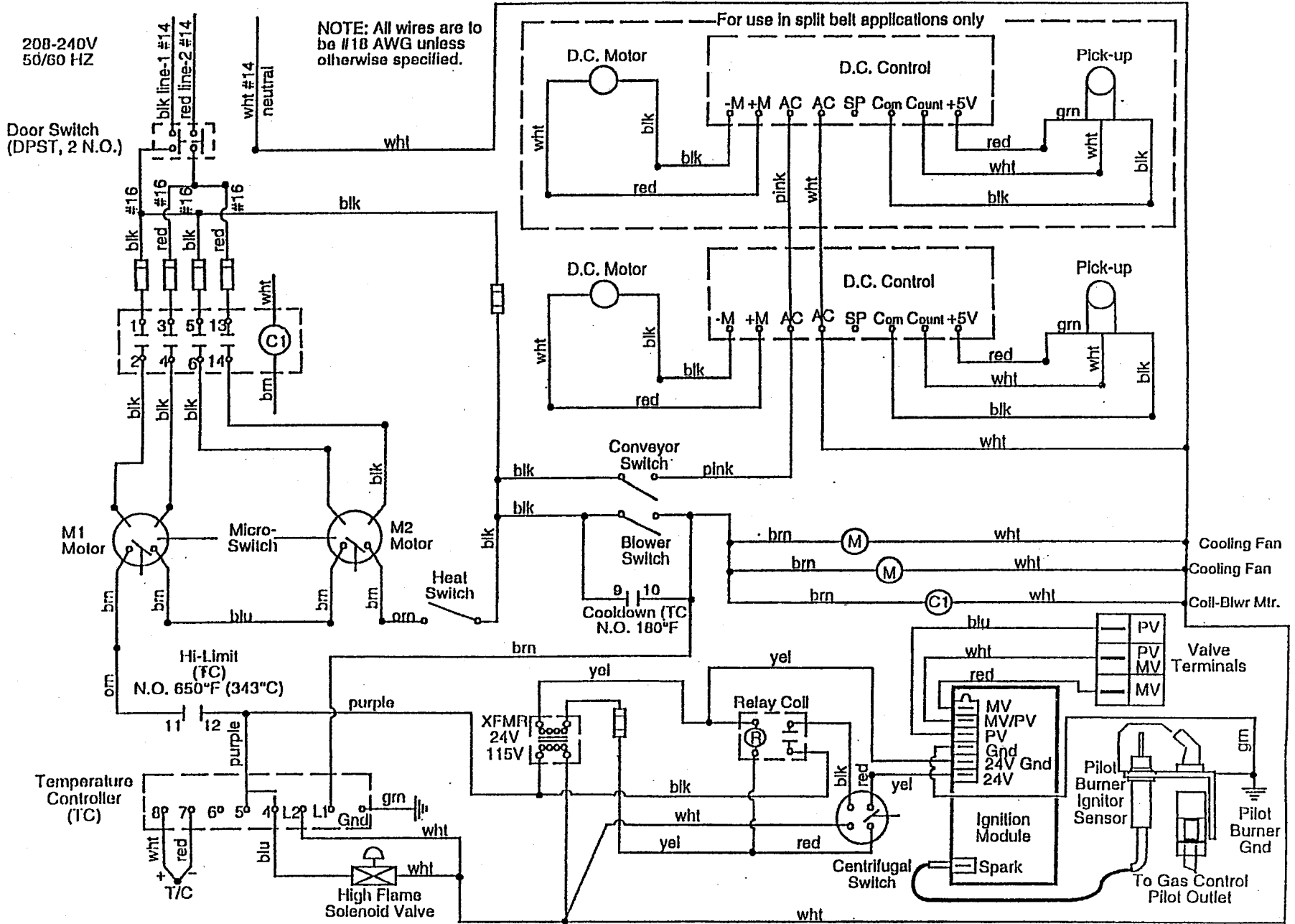
1. ALL WIRES ARE TO BE NO. 18 AWG. UNLESS OTHERWISE SPECIFIED.
2. WD LABEL P/N 37855.

PS200-series electric oven (export version), 208/240V main blower motor and heating elements, 120V control circuit 220-240V, 50/60 Hz, 3 Ph, 3 pole, 4 wire supply (3 hot, 1 ground)

160

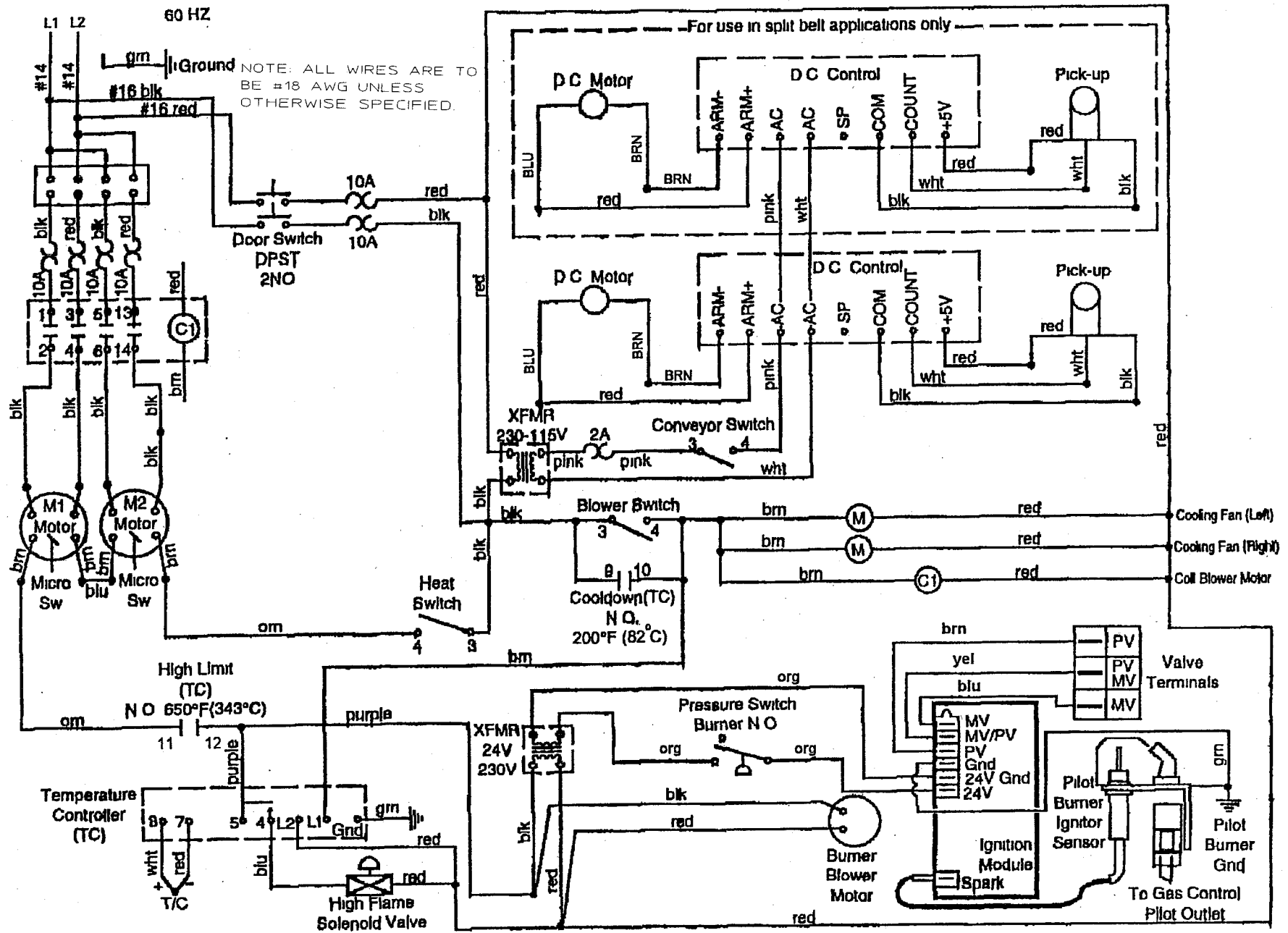


PS310/314/360/360WB gas oven (with analog temp control), 208/240V main blower motor, 120V control circuit 208/240V, 50/60 Hz, 1 Ph, 3 pole, 4 wire supply (2 hot, 1 neutral, 1 ground)

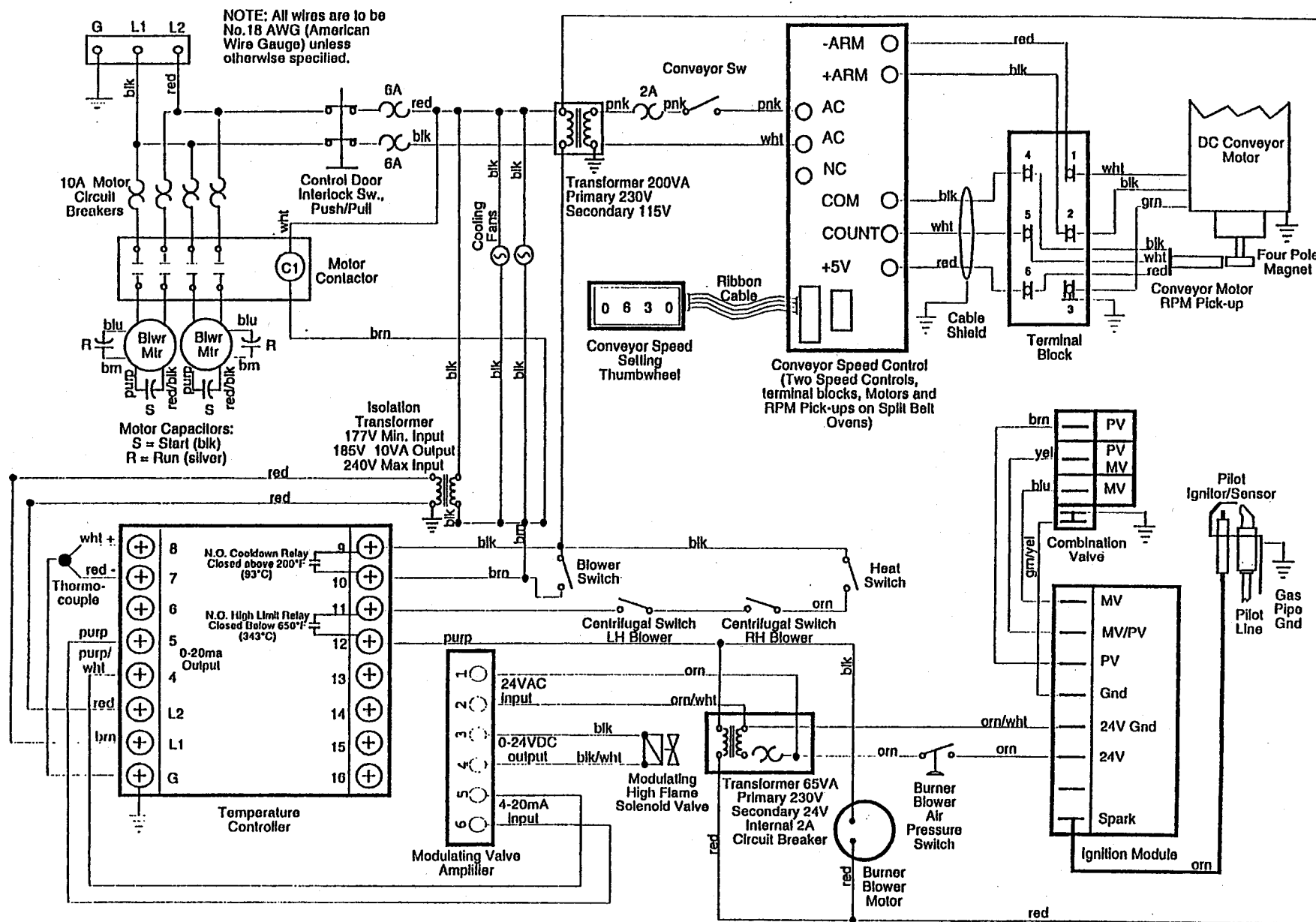


PS310/314/360/360WB gas oven (with digital temp control), 208/240V main blower motor, 120V control circuit
208/240V, 50/60 Hz, 1 Ph, 3 pole, 4 wire supply (2 hot, 1 neutral, 1 ground)

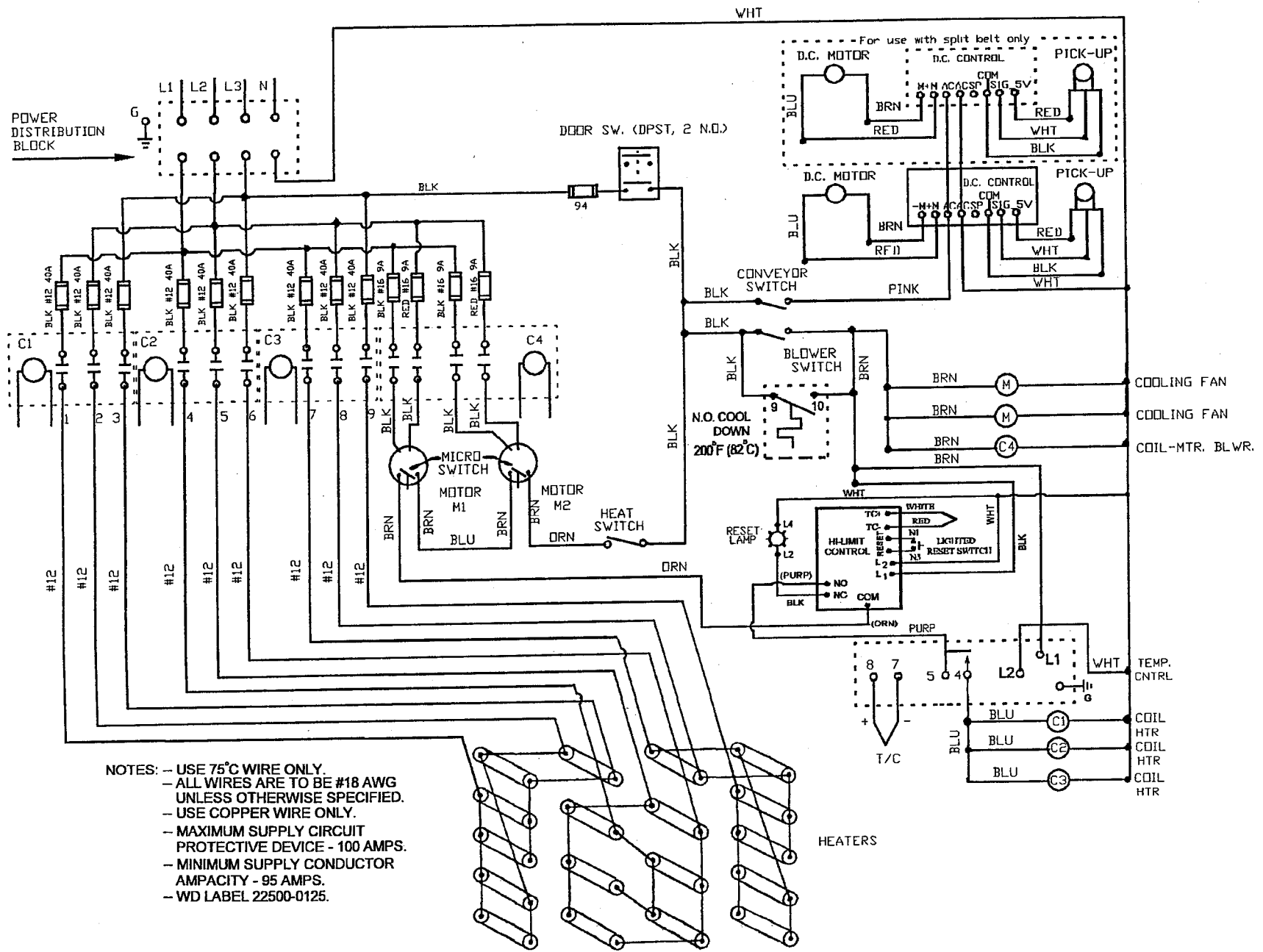
162



PS360WB70 gas oven (with Midco burner and solenoid valve), 208/240V main blower motor and control circuit 208/240V, 50/60 Hz, 1 Ph, 2 pole, 3 wire supply (2 hot, 1 ground)

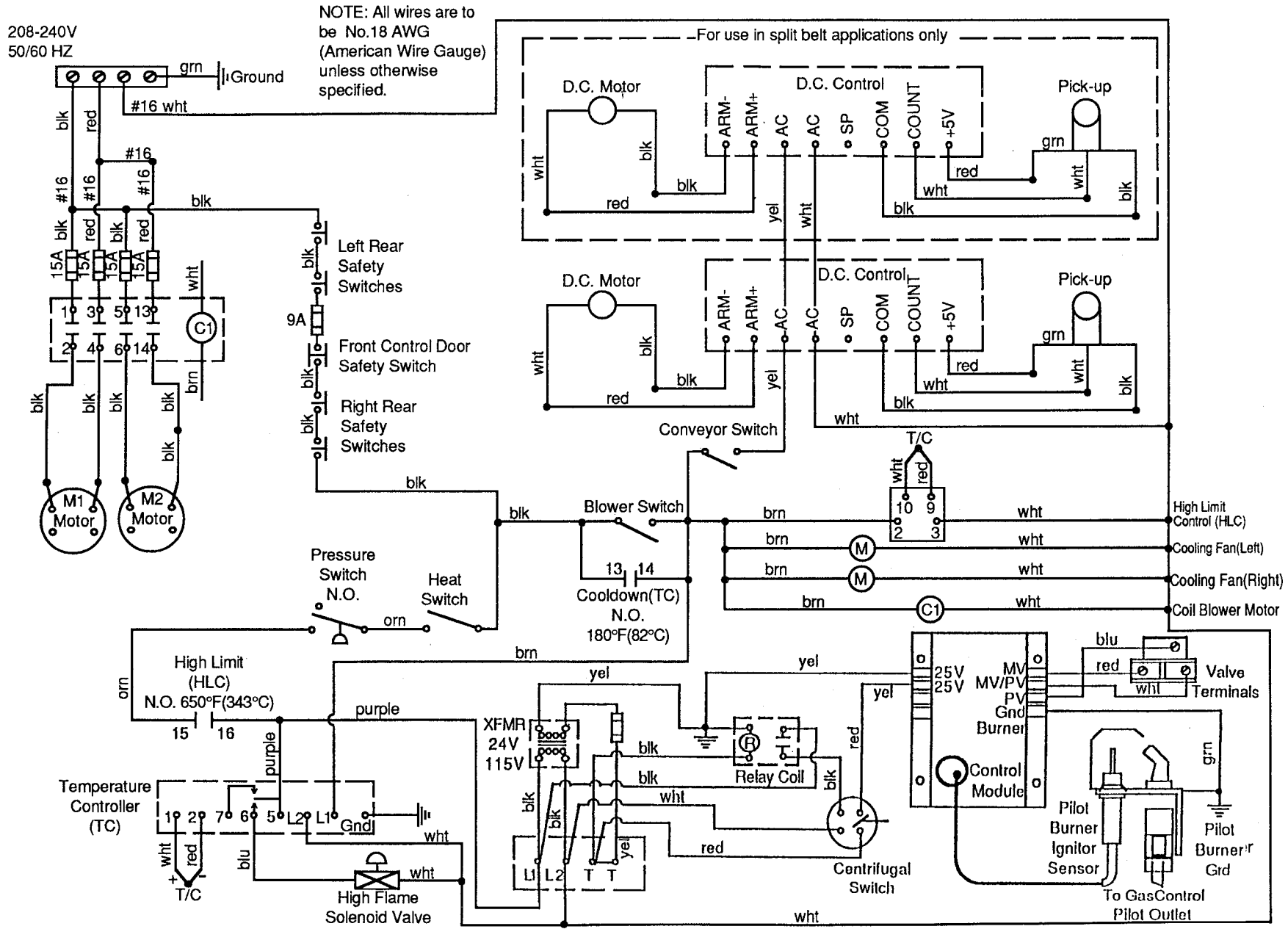


PS360EWB gas oven (with Midco burner and early temp control 32571), 208/240V main blower motor and control circuit 208/240V, 50/60 Hz, 1 Ph, 2 pole, 3 wire supply (2 hot, 1 ground)

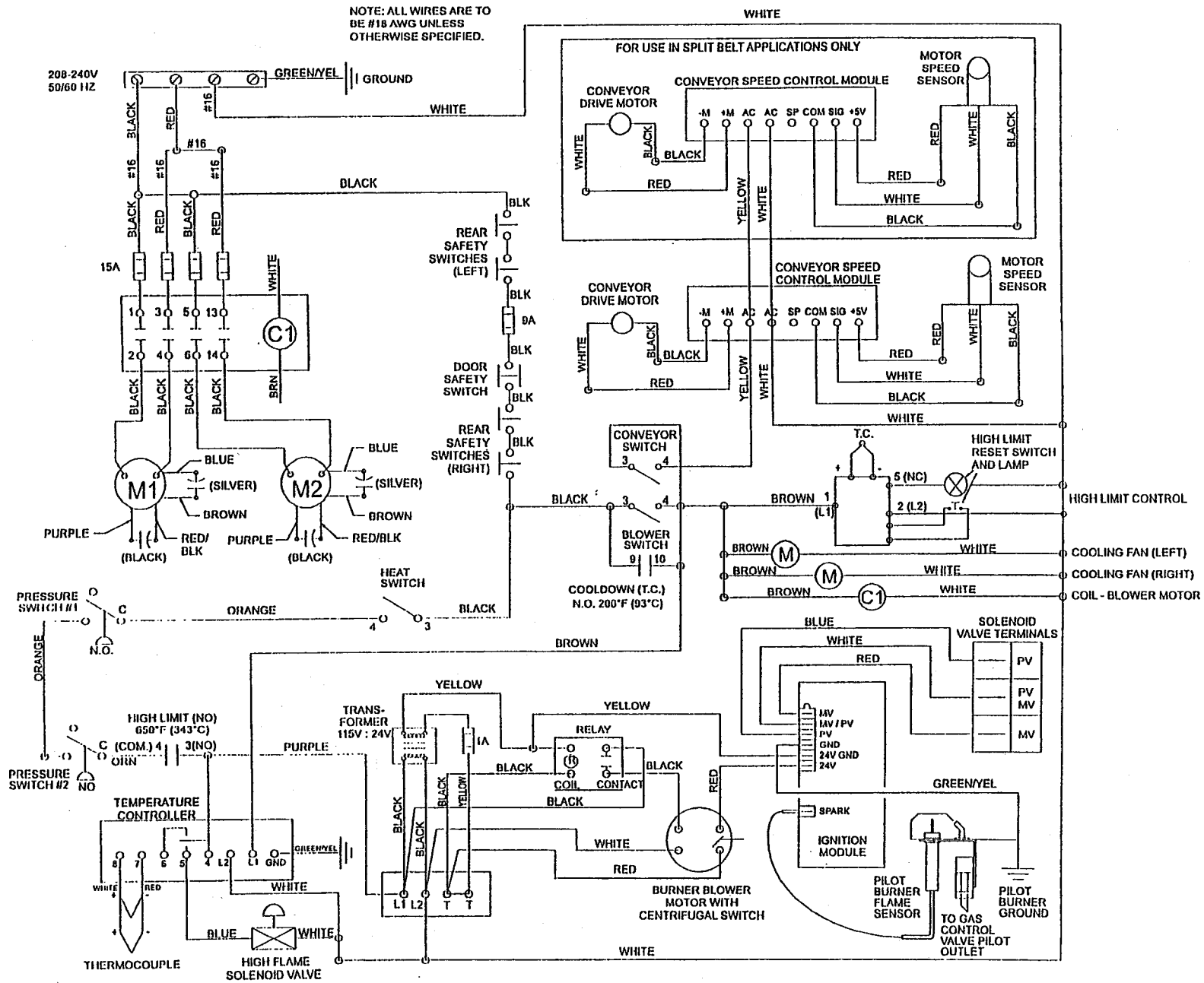


- NOTES: - USE 75°C WIRE ONLY.
 - ALL WIRES ARE TO BE #18 AWG UNLESS OTHERWISE SPECIFIED.
 - USE COPPER WIRE ONLY.
 - MAXIMUM SUPPLY CIRCUIT PROTECTIVE DEVICE - 100 AMPS.
 - MINIMUM SUPPLY CONDUCTOR AMPACITY - 95 AMPS.
 - WD LABEL 22500-0125.

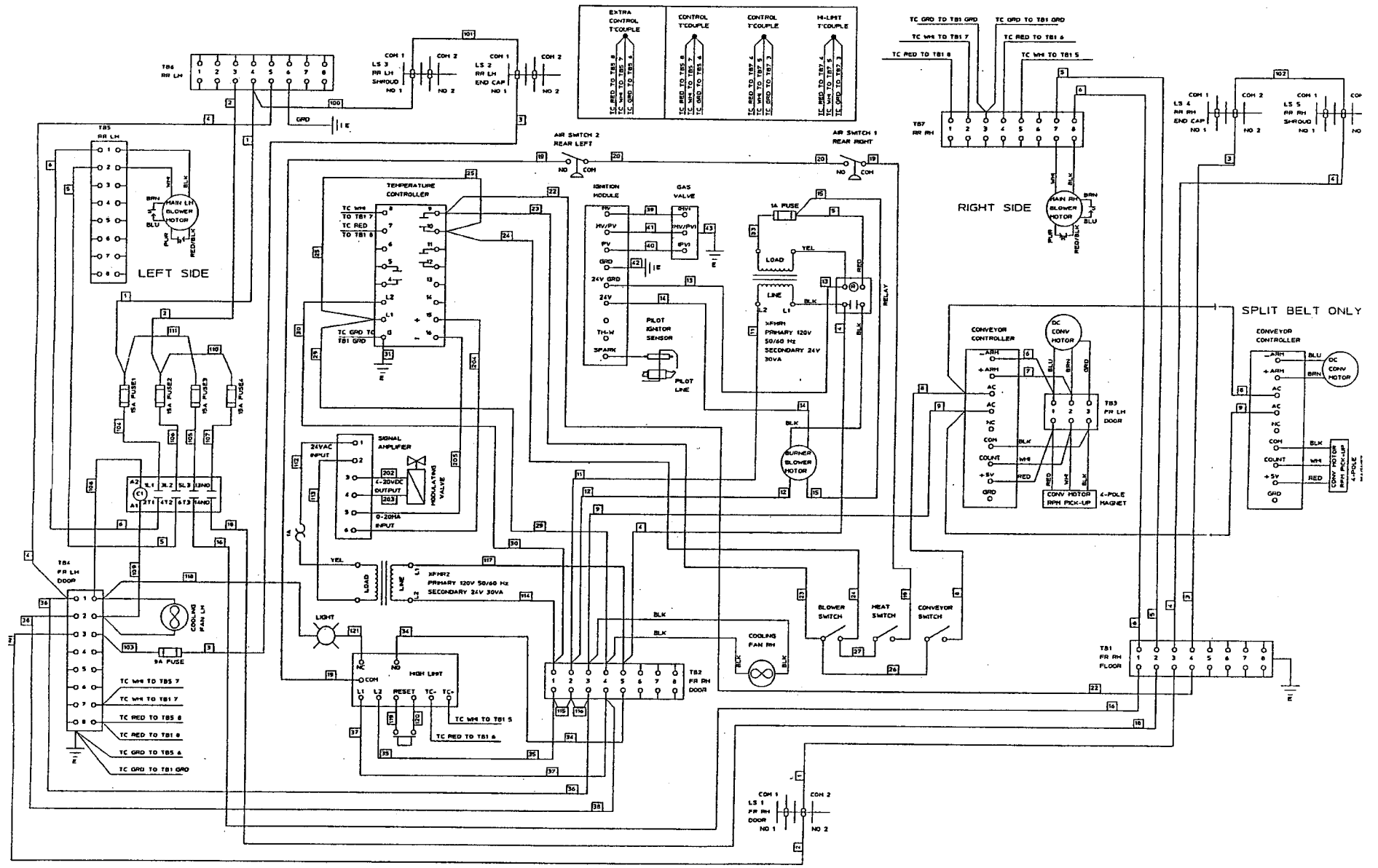
PS360-series electric oven, 208/240V main blower motor and heating elements, 120V control circuit 208/240V, 50/60 Hz, 3 Ph, 4 pole, 5 wire supply (3 hot, 1 neutral, 1 ground)



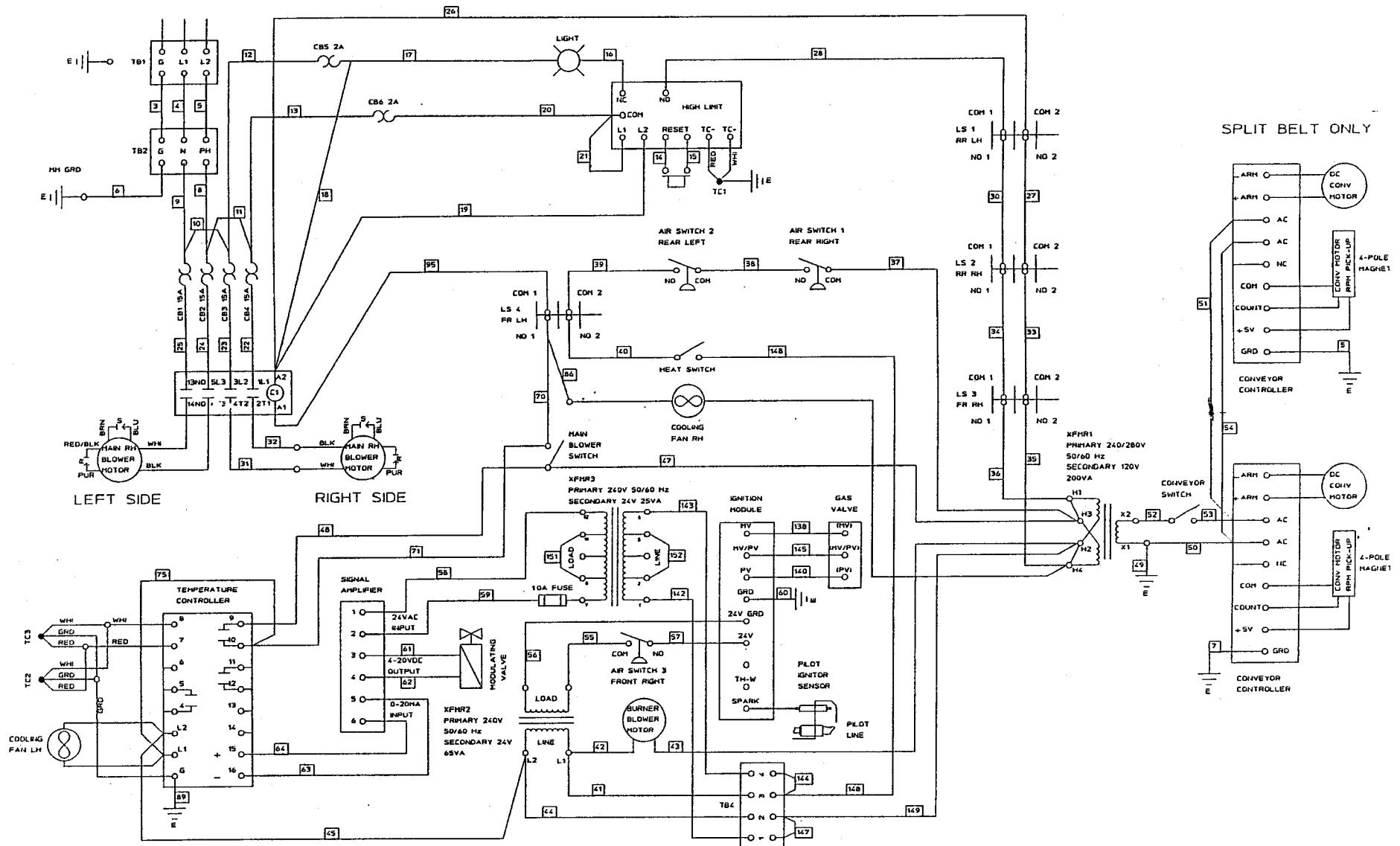
PS570 or PS570S gas oven (with solenoid valve and analog temp control), 208/240V main blower motor, 120V control circuit 208/240V, 50/60 Hz, 1 Ph, 3 pole, 4 wire supply (2 hot, 1 neutral, 1 ground)



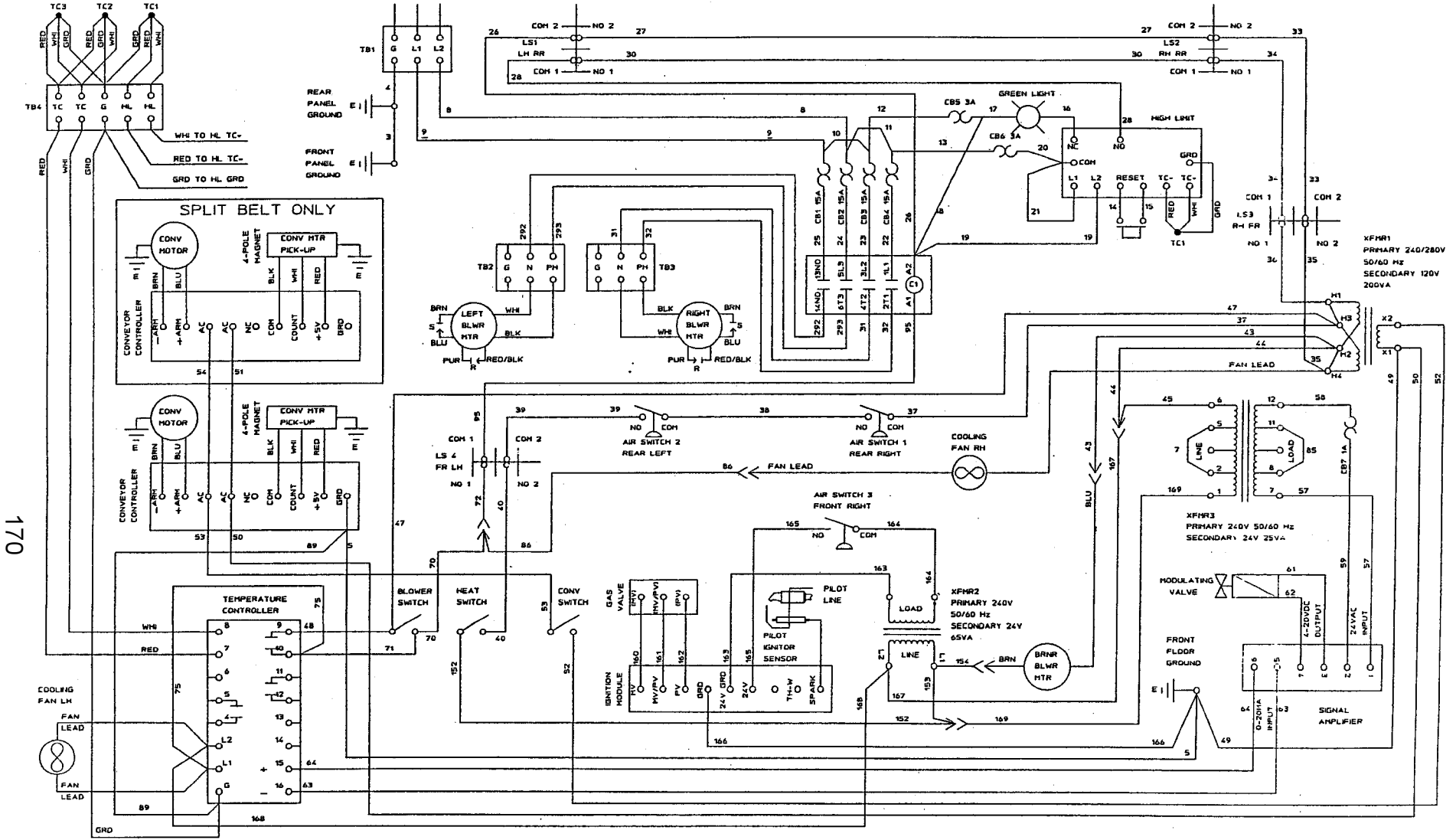
PS570 or PS570S gas oven (with solenoid valve and digital temp control), 208/240V main blower motor, 120V control circuit 208/240V, 50/60 Hz, 1 Ph, 3 pole, 4 wire supply (2 hot, 1 neutral, 1 ground)



PS570S gas oven (with modulating valve), 208/240V main blower motor, 120V control circuit
 208/240V, 50/60 Hz, 1 Ph, 3 pole, 4 wire supply (2 hot, 1 neutral, 1 ground)

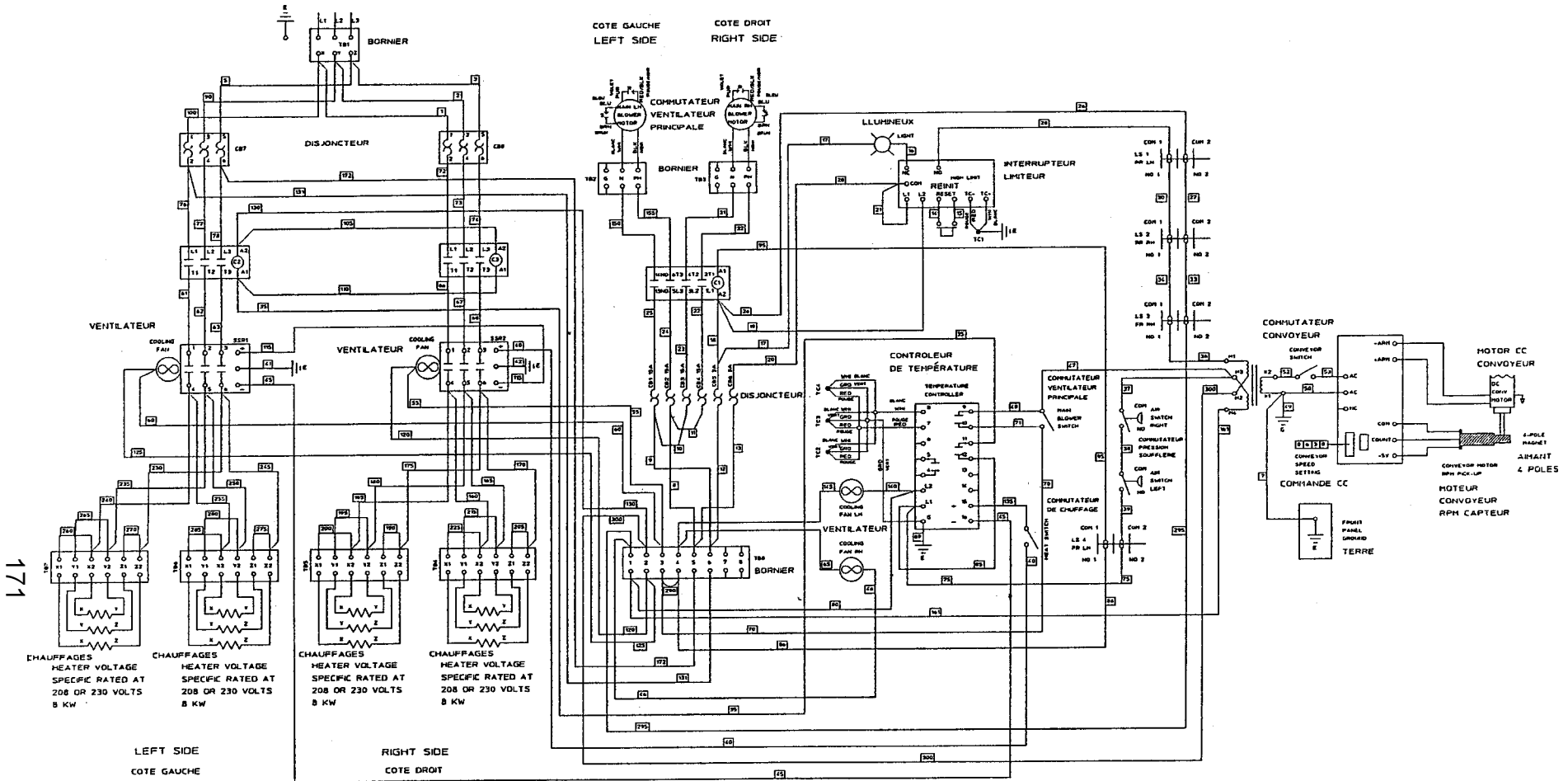


PS55 gas oven (early), 208/240V main blower motor and control circuit
 208/240V, 50/60 Hz, 1 Ph, 2 pole, 3 wire supply (2 hot, 1 ground)



170

PS555G or PS570G gas oven, 208/240V main blower motor and control circuit
 208/240V, 50/60 Hz, 1 Ph, 2 pole, 3 wire supply (2 hot, 1 ground)



PS55 electric oven, 208/240V main blower motor, heating elements and control circuit
 208/240V, 50/60 Hz, 3 Ph, 3 pole, 4 wire supply (3 hot, 1 ground)